

Fig.1 Flow of Making Image Distortion Map



(a) BPB42



(b) BPB45



(c) BPB50

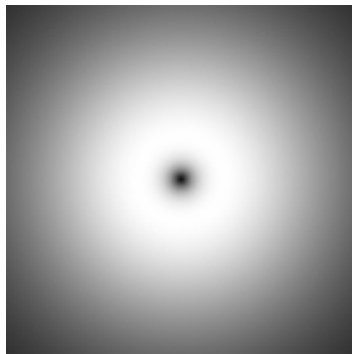


(d) BPB55

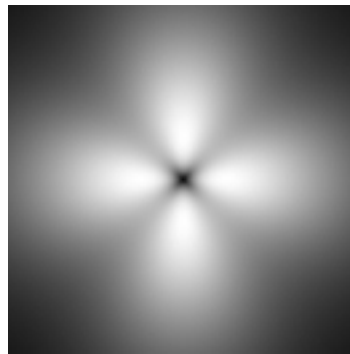


(e) BPB60

Fig.2 Original Multi band images (512×512)



(a) Isotropic MTF model

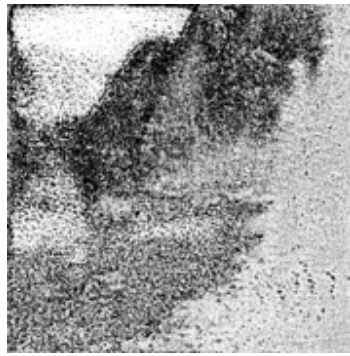


(b) Anisotropic MTF model

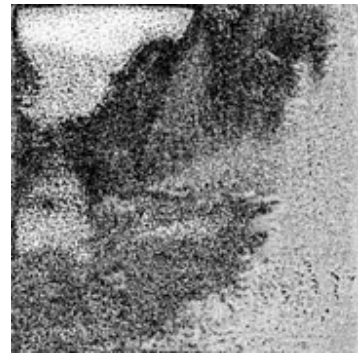
Fig.3 MTF model



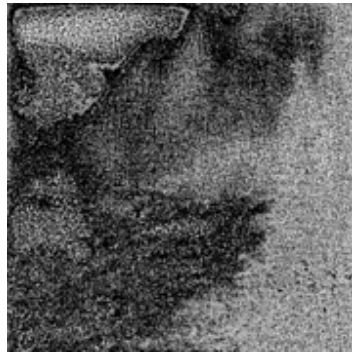
(a) $Q=60$



(b) $Q=70$



(c) $Q=80$



(d) $Q=90$



(e) $Q=100$

Fig.4 Results of Image Distortion Map

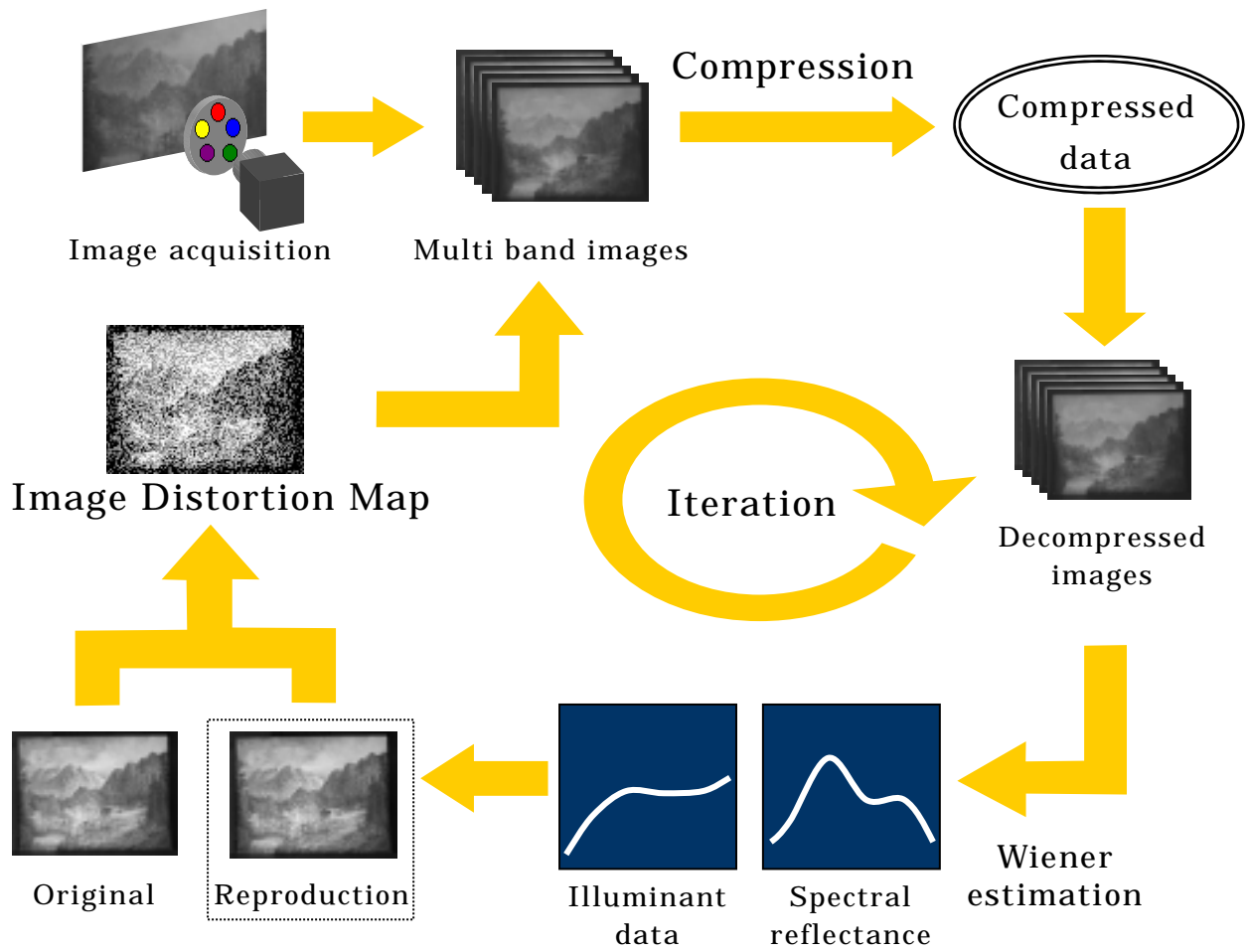


Fig.5 Flow of optimal compression



Reproduced image

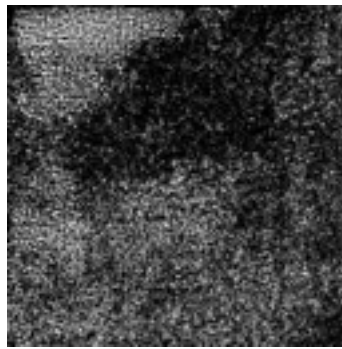


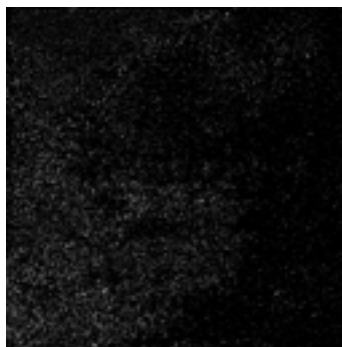
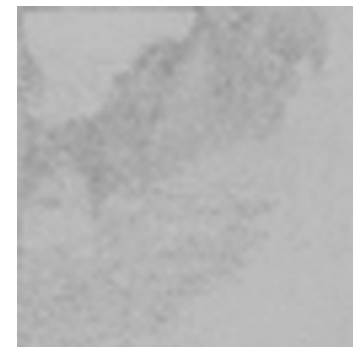
Image Distortion Map
(a) 1st



Distribution of Q



(b) 5times process



(c) 10times process



(d) 15times process



Fig.6 Result of inhomogeneous quantization

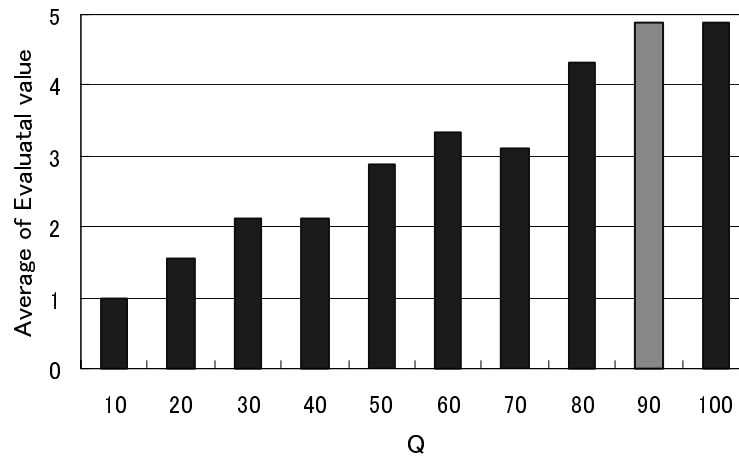


Fig.7 Evaluation result in homogeneous quantization

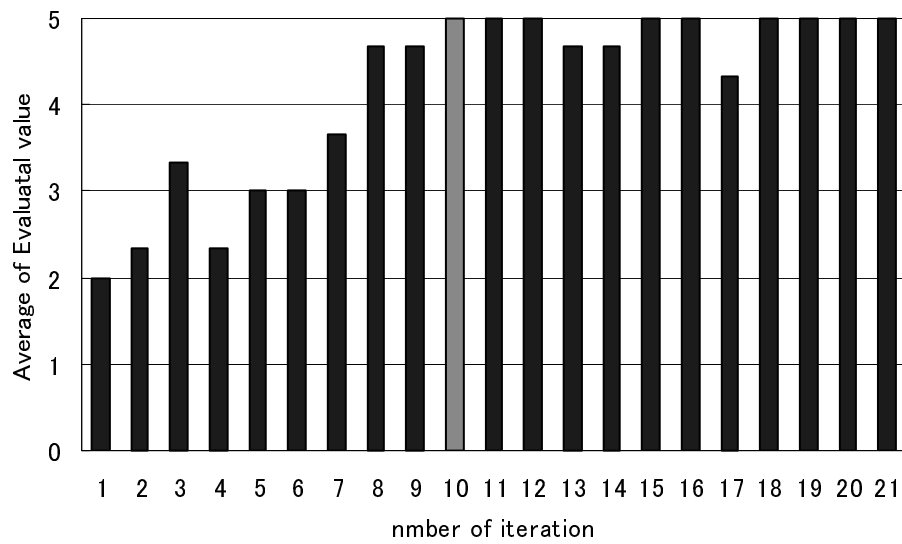
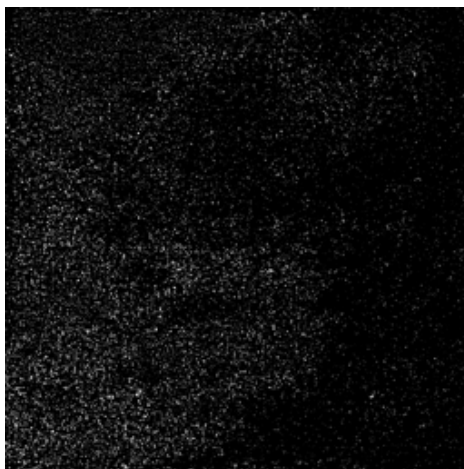
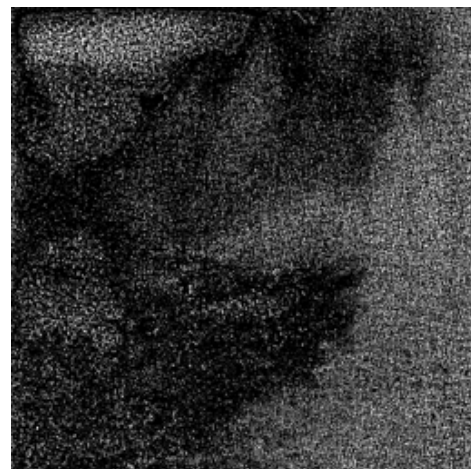


Fig.8 Evaluation result in inhomogeneous quantization



(a) Inhomogeneous quantization



(b) Homogeneous quantization

Fig.9 Comparison of Image Distortion Map